

OFFICE SPACE FOR LEASE

BRIDGEWOOD I

654 N SAM HOUSTON PARKWAY EAST | HOUSTON, TX 77060

* MOVE-IN READY SUITES AND GROSS RATES
STARTING AS LOW AS \$10.00 PER SQUARE FOOT
* **\$1.00 per square foot move allowance**



** NEW LEASES SIGNED BY 06/30/20
WITH MINIMUM 3 - YEAR TERM*

FOR LEASING INFORMATION, CONTACT:

MARCI PHILLIPS | 713.209.5994
marci.phillips@madisonmarquette.com

LIVY WHITE | 713.209.5979
livy.white@madisonmarquette.com

 **MadisonMarquette**
A Capital Guidance Company



BUILDING AMENITIES & FEATURES

- Common areas renovated in 2012
- Convenient to I-45, Beltway 8 & Hardy Toll Road
- Located minutes from Intercontinental Airport
- Parking ratio 4/1,000 sf; \$30/mo. reserved (covered); Free surface spaces available
- Courtesy Guard
- Building conference room
- On-site engineering
- Card key access with visitor telephone

www.NorthBeltProperties.com

FOR LEASING INFORMATION, CONTACT:

MARCI PHILLIPS | 713.209.5994
marci.phillips@madisonmarquette.com

LIVY WHITE | 713.209.5979
livy.white@madisonmarquette.com



MadisonMarquette
A Capital Guidance Company

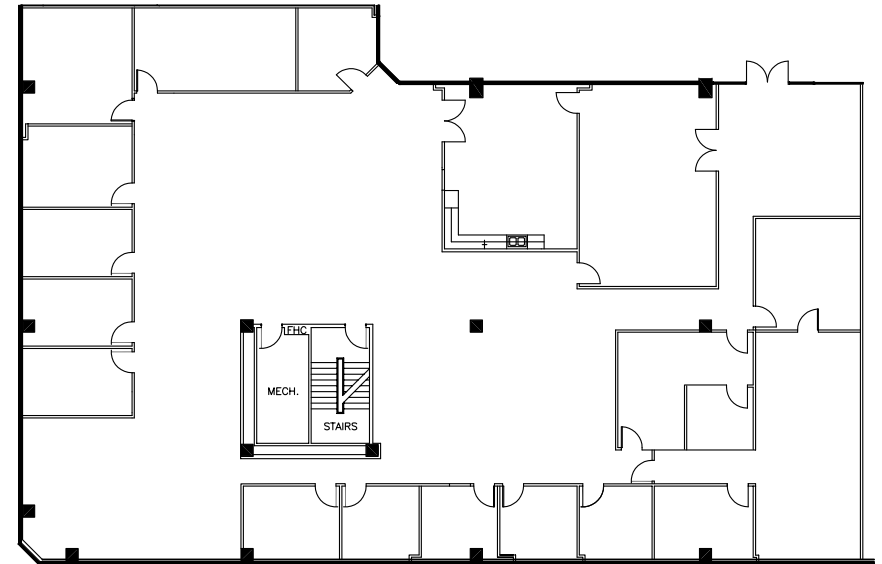
AVAILABLE SPACE

BRIDGEWOOD I

654 N SAM HOUSTON PARKWAY EAST | HOUSTON, TX 77060

SUITE	SQ. FT.	DESCRIPTION
105	2,308	Building lobby exposure, conference room, 5 offices, work room and storage.
128	938	Reception with 2 offices. Move-in ready.
144	7,262	Reception area, 12 offices, conference room, IT closet, break room, large bullpen area.
165	1,602	Open reception, break room, 1 office, conference room.
200	10,353	Bullpen areas with 12 offices, conference room and large break room. Excellent Lobby Exposure.
220	2,085	Open area with four offices.
240	1,942	Reception, 2 offices, storage, IT conference room and open work area.
250	13,017	Combination of offices and bullpen areas, conference room, 2 break rooms and private restrooms. Will divide. Can be combined with Suite 200 and 220 for a total of 25,455 SF.
310	3,706	Reception, 5 offices, bullpen areas and wetbar. Available June, 2020.
340	7,046	Open concept with large bull pen areas, office, break area, conference room.
360	1,731	Three offices, open bull pen area.

SUITE 200: 10,353 RSF | Excellent Lobby Exposure



02/05/20

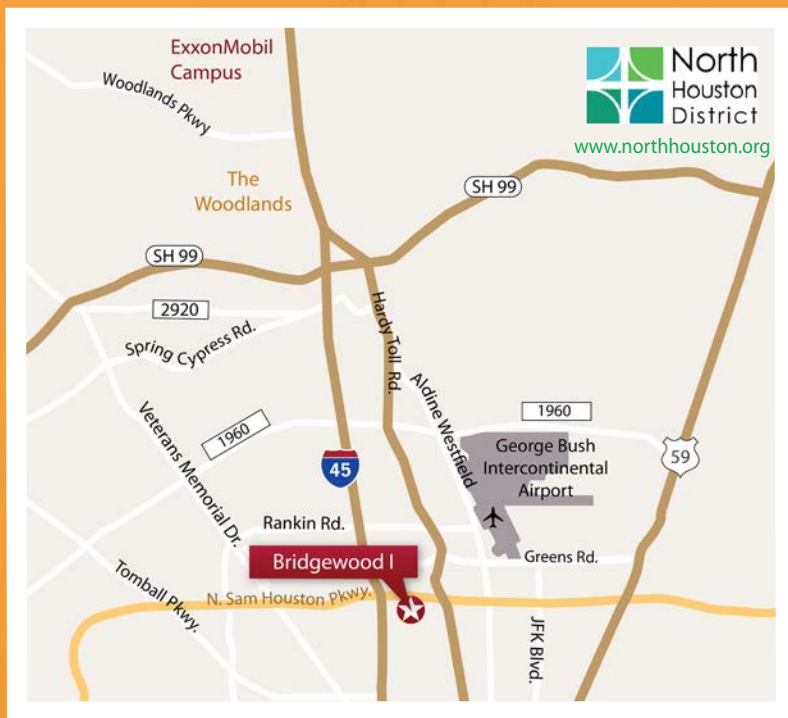
www.NorthBeltProperties.com

FOR LEASING INFORMATION, CONTACT:

MARCI PHILLIPS | 713.209.5994
marci.phillips@madisonmarquette.com

LIVY WHITE | 713.209.5979
livy.white@madisonmarquette.com





Located in the North Houston District
with Excellent Freeway Access.

www.NorthBeltProperties.com

FOR LEASING INFORMATION, CONTACT:

MARCI PHILLIPS | 713.209.5994
marci.phillips@madisonmarquette.com

LIVY WHITE | 713.209.5979
livy.white@madisonmarquette.com

